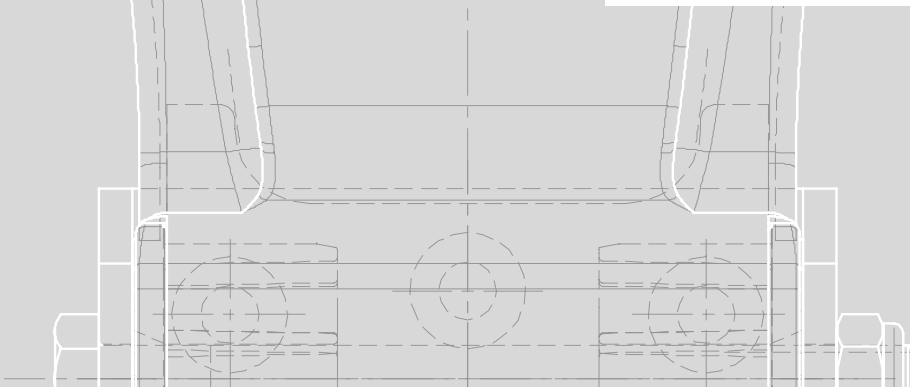


9

REAR HINGES  
RÜCKWÄRTIGE SCHARNIERE  
CHARNIÈRES ARRIÈRES

# BISAGRAS TRASERAS



**LONIA**



**SAR**



**TAMBRE GRANDE**



**TAMBRE PEQUEÑA**



**EUME GRANDE**



**EUME PEQUEÑA**



**TÁMEGA CUELLO LARGO**



**TÁMEGA CUELLO CORTO**

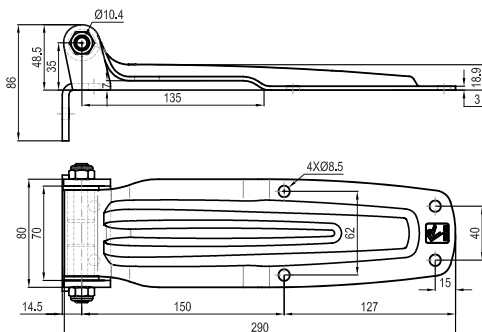


# BISAGRAS TRASERAS LONIA

REAR HINGE RÜCKWÄRTIGE SCHARNIERE CHARNIÈRES ARRIÈRES

9.1

**BISAGRA TRASERA LONIA SOP "ESC" | Rear hinge Lonia with square bracket |**  
**Rückscharnier Lonia mit Bock in Winkelform | Charnière arrière Lonia chape équerre |**

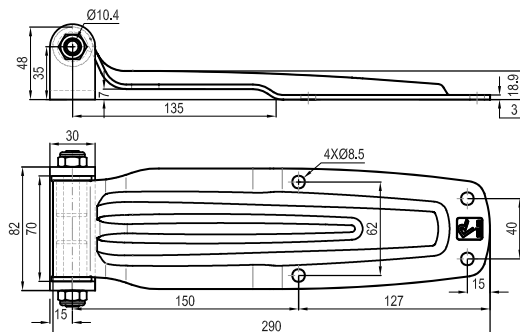


959 g

| INOX      | ZINC      |
|-----------|-----------|
| 401100208 | 401100108 |



**BISAGRA TRASERA LONIA SOP "U" 30 | Rear hinge Lonia with "U" 30 bracket |**  
**Rückscharnier Lonia mit Bock in U-Form 30 | Charnière arrière Lonia chape U 30 |**

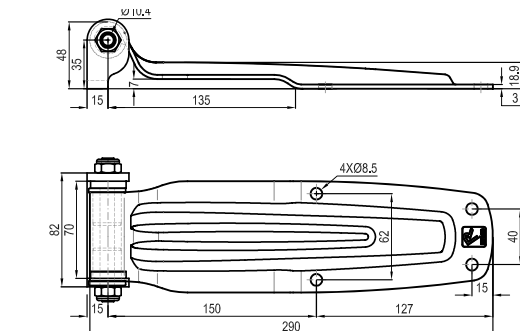


891 g

| INOX      | ZINC      |
|-----------|-----------|
| 401120208 | 401120108 |



**BISAGRA TRASERA LONIA SOP "U" 15 | Rear hinge Lonia with "U" 15 bracket |**  
**Rückscharnier Lonia mit Bock in U-Form 15 | Charnière arrière Lonia chape U 15 |**

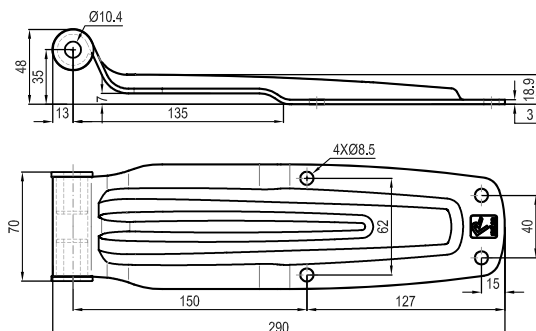


834 g

| INOX      | ZINC      |
|-----------|-----------|
| 401130208 | 401130108 |



**PALA TRASERA LONIA | Rear hinge blade Lonia |**  
**Rückscharnierblatt Lonia | Penture arrière Lonia |**



687 g

| INOX      | ZINC      |
|-----------|-----------|
| 205010265 | 205010165 |



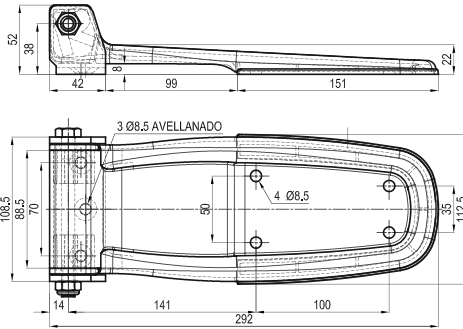
# BISAGRAS TRASERAS SAR

REAR HINGES RÜCKWÄRTIGE SCHARNIERE CHARNIÈRES ARRIÈRES

9.2

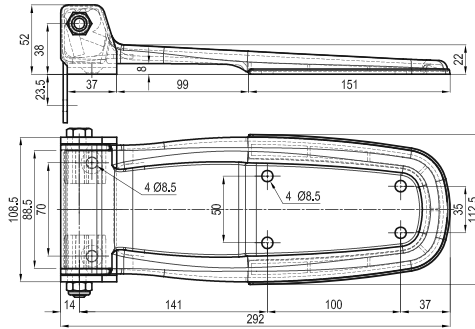
BISAGRA TRASERA SAR SOPORTE "U" 42 INOX | SAR hinge with U bracket | Scharnier SAR mit Bock U-Form | Charnière SAR avec chape U 42 |

**INOX**  
**401340201** 1.419 g



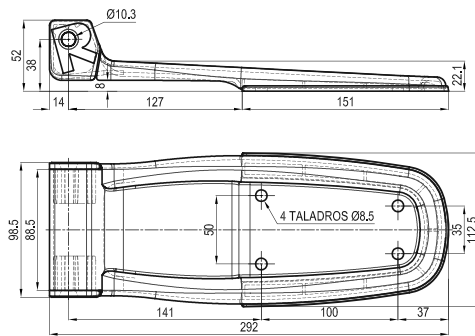
BISAGRA TRASERA SAR SOPORTE ESCUADRA INOX | SAR hinge with square bracket | Scharnier SAR mit Bock Winkelform | Charnière SAR avec chape en équerre |

**INOX**  
**401340202** 1.496 g



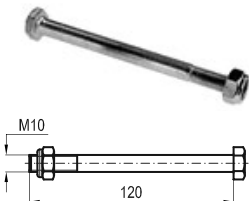
PALA SAR | Hinge blade SAR | Scharnierblatt SAR | Penture SAR |

**INOX**  
**205010261** 1.063 g



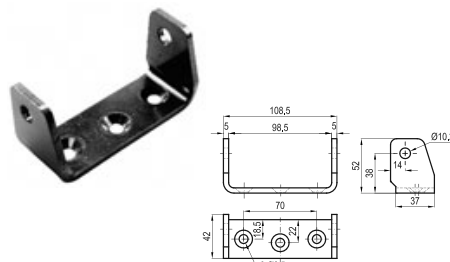
TORNILLO M. 10 x 120 C/TUERCA AUTOBL.  
| Pin and nut | Bolzen mit Mutter  
| Axe et écrou |

**INOX**  
**302070208** 104 g



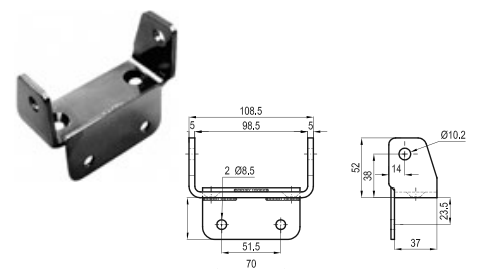
SOPORTE "U" 42  
| U 42 hinge bracket | Scharnierbock U-Form  
42 | Chape en U 42 |

**INOX**  
**205020250** 256 g



SOPORTE ESCUADRA | Square hinge bracket  
| Scharnierbock Winkelform  
| Chape en équerre |

**INOX**  
**205020251** 329 g

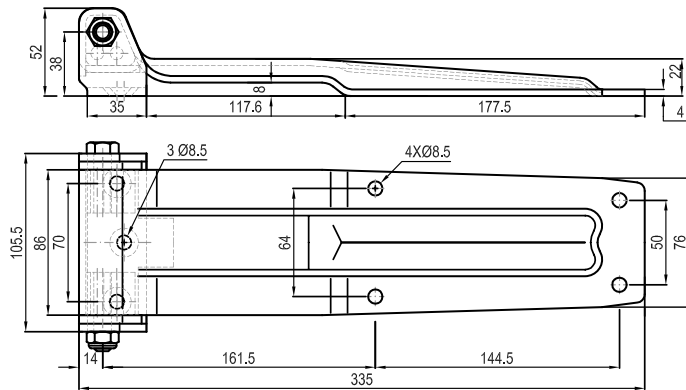


# BISAGRAS TRASERAS TAMBRE

REAR HINGES RÜCKWÄRTIGE SCHARNIERE CHARNIÈRES ARRIÈRES

9.3

**BISAGRA TRASERA TAMBRE GRANDE SOPORTE "U" 2050** | Big TAMBRE hinge with U bracket |  
Scharnier TAMBRE gross mit Bock in U-Form | Grande charnière TAMBRE avec chape en U |

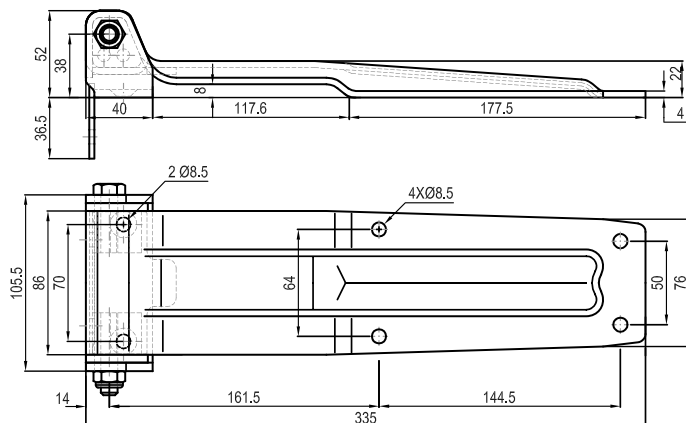


1.540 g

| INOX      | ZINC      |
|-----------|-----------|
| 401140207 | 401140107 |



**BISAGRA TRASERA TAMBRE GRANDE SOPORTE ESCUADRA 2052** | Big TAMBRE hinge with square bracket |  
Scharnier TAMBRE gross mit Bock Winkelform | Grande charnière TAMBRE avec chape en équerre |

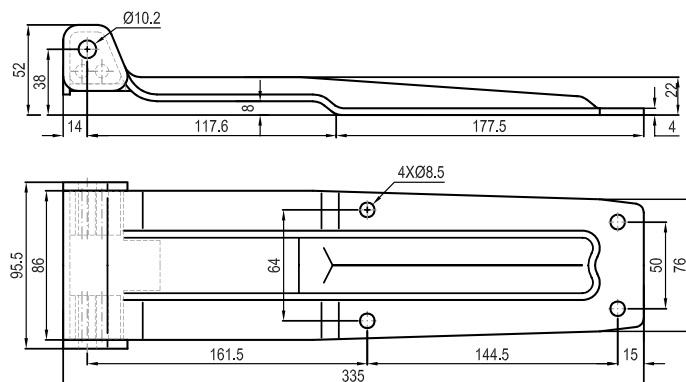


1.628 g

| INOX      | ZINC      |
|-----------|-----------|
| 401150207 | 401150107 |



**PALA TAMBRE GRANDE** | Big TAMBRE hinge blade | Scharnierblatt TAMBRE gross | Grande penture TAMBRE |



1.185 g

| INOX      | ZINC      |
|-----------|-----------|
| 205010207 | 205010107 |



# BISAGRAS TRASERAS TAMBRE

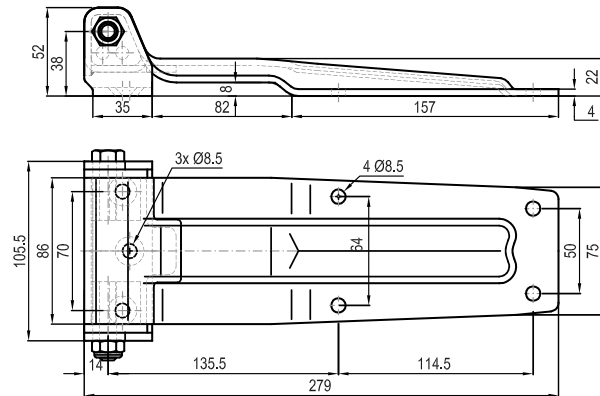
REAR HINGES RÜCKWÄRTIGE SCHARNIERE CHARNIÈRES ARRIÈRES

9.4

**BISAGRA TRASERA TAMBRE PEQUEÑA SOPORTE "U" 2047** | Small TAMBRE hinge with U bracket U | Scharnier TAMBRE klein mit Bock U-Form | Petite charnière TAMBRE avec chape en U |

| INOX      | ZINC      |
|-----------|-----------|
| 401140208 | 401140108 |

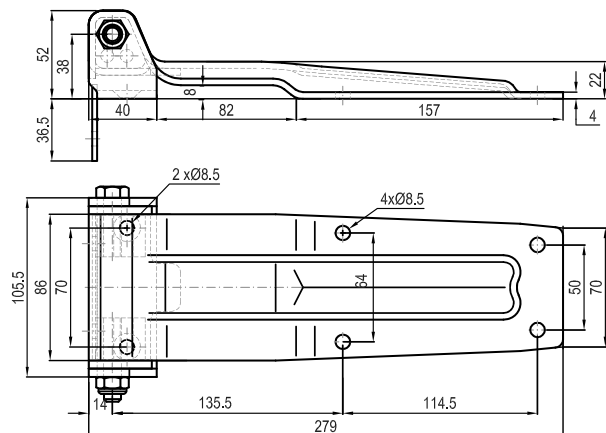
1.382 g



**BISAGRA TRASERA TAMBRE PEQUEÑA SOPORTE ESCUADRA 2053** | Small TAMBRE hinge with square bracket | Scharnier TAMBRE klein mit Bock Winkelform | Petite charnière TAMBRE avec chape en équerre |

| INOX      | ZINC      |
|-----------|-----------|
| 401150208 | 401150108 |

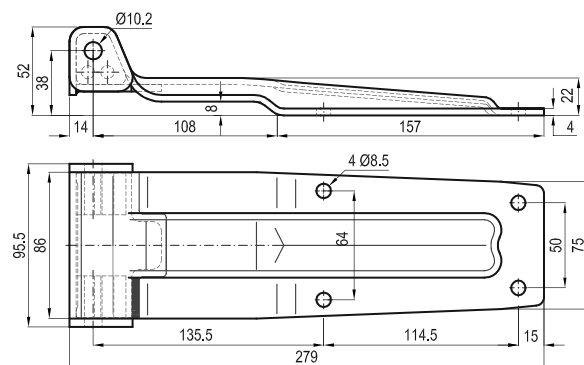
1.435 g



**PALA TAMBRE PEQUEÑA** | Small TAMBRE hinge blade | Scharnierblatt TAMBRE klein | Petite penture TAMBRE |

| INOX      | ZINC      |
|-----------|-----------|
| 205010208 | 205010108 |

1.021 g

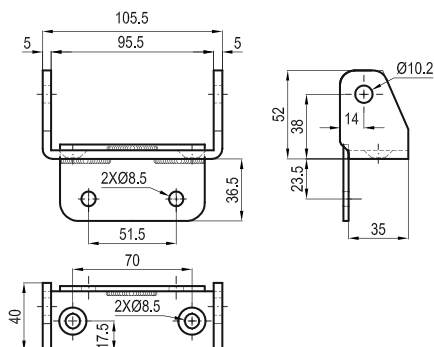


# BISAGRAS TRASERAS TAMBRE

REAR HINGES RÜCKWÄRTIGE SCHARNIERE CHARNIÈRES ARRIÈRES

9.5

**SOPORTE ESCUADRA** | Square hinge bracket | Scharnierbock Winkelform | Chape en équerre |

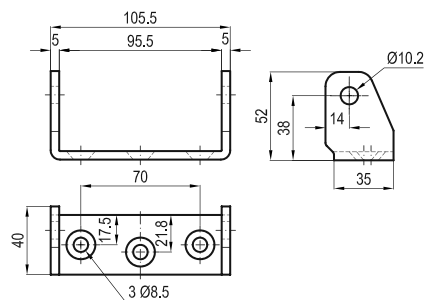


326 g

| INOX             | ZINC             |
|------------------|------------------|
| <b>205020215</b> | <b>205020115</b> |



**SOPORTE "U" 35** | U 35 hinge bracket | Scharnierbock U-Form 35 | Chape en U 35 |

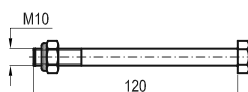


234 g

| INOX             | ZINC             |
|------------------|------------------|
| <b>205020214</b> | <b>205020114</b> |



**TORNILLO M. 10x120 C/TUERCA AUTOBL.** | Pin and nut | Bolzen mit Mutter | Axe et écrou |



104 g

| INOX             | ZINC             |
|------------------|------------------|
| <b>302070208</b> | <b>302070108</b> |



# BISAGRAS TRASERAS EUME

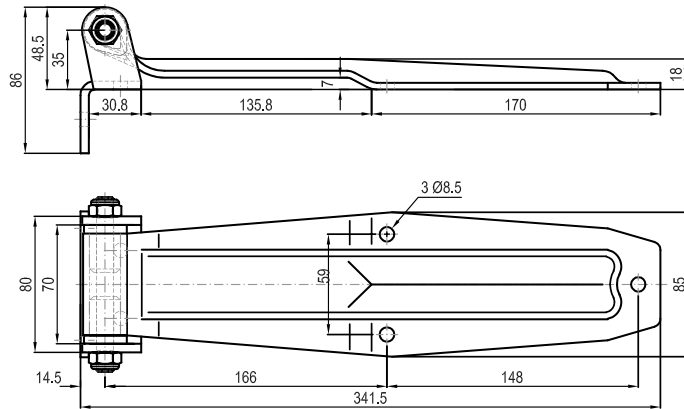
REAR HINGES RÜCKWÄRTIGE SCHARNIERE CHARNIÈRES ARRIÈRES

9.6

**BISAGRA TRASERA EUME GRANDE SOPORTE ESCUADRA 30** | Big EUME hinge with small square bracket | Scharnier EUME gross mit kleinem Bock in Winkelform | Grande charnière EUME avec chape petite équerre |

| INOX      | ZINC      |
|-----------|-----------|
| 401100205 | 401100105 |

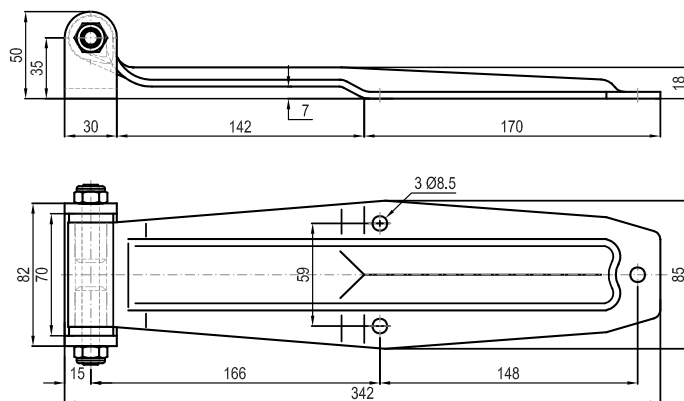
1.293 g



**BISAGRA TRASERA EUME GRANDE SOPORTE "U" 30** | Big EUME hinge with medium 30 U bracket | Scharnier EUME gross mit mittlerem Bock in U-Form | Grande charnière EUME avec chape moyen U |

| INOX      | ZINC      |
|-----------|-----------|
| 401120205 | 401120105 |

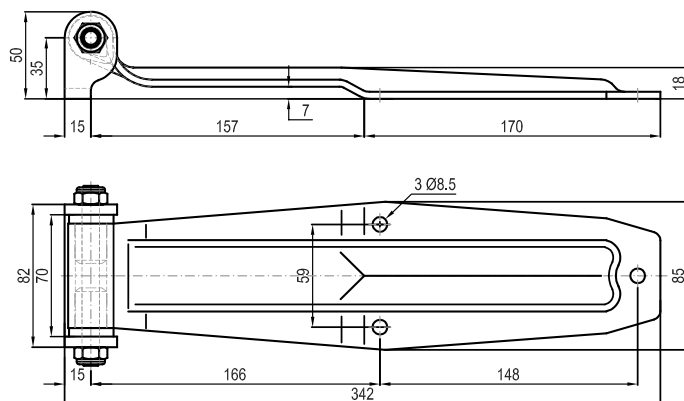
1.237 g



**BISAGRA TRASERA EUME GRANDE SOPORTE "U" 15** | Big EUME hinge with small 15 U bracket | Scharnier EUME gross mit kleinem Bock in U-Form | Grande charnière EUME avec chape petit U |

| INOX      | ZINC      |
|-----------|-----------|
| 401130205 | 401130105 |

1.143 g



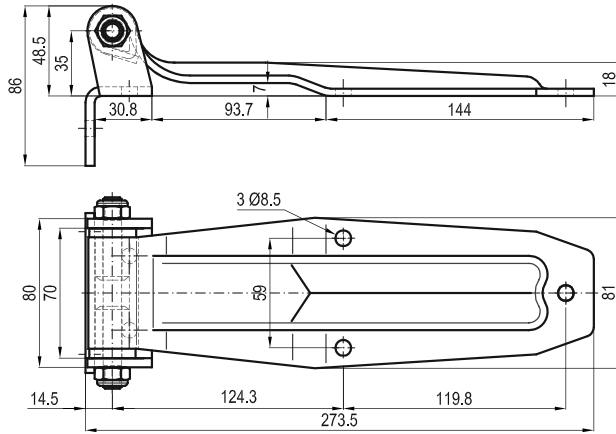


# BISAGRAS TRASERAS EUME

REAR HINGES RÜCKWÄRTIGE SCHARNIERE CHARNIÈRES ARRIÈRES

9.7

**BISAGRA TRASERA EUME PEQUEÑA SOPORTE ESCUADRA 30** | Small EUME hinge with small square bracket | Scharnier EUME klein mit kleinem Bock in Winkelform | Petite charnière EUME avec chape petite équerre |

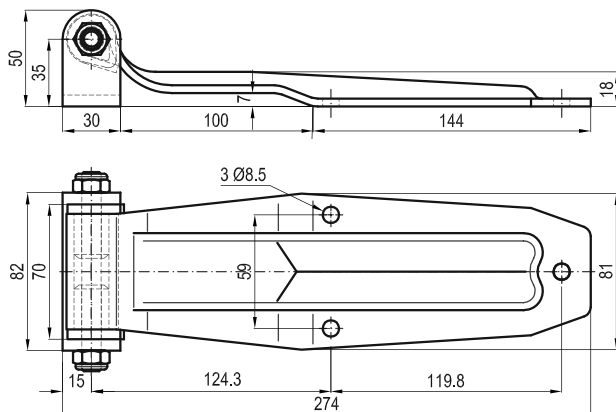


1.089 g

| INOX      | ZINC      |
|-----------|-----------|
| 401100206 | 401100106 |



**BISAGRA TRASERA EUME PEQUEÑA SOPORTE "U" 30** | Small EUME hinge with medium 30 U bracket | Scharnier EUME klein mit mittlerem Bock in U-Form | Petite charnière EUME avec chape moyen U |

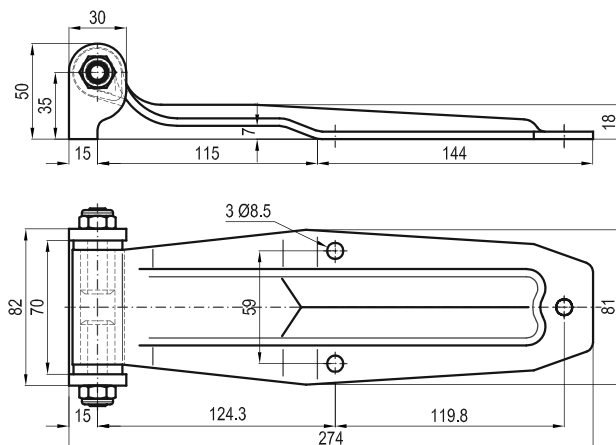


1.033 g

| INOX      | ZINC      |
|-----------|-----------|
| 401120206 | 401120106 |



**BISAGRA TRASERA EUME PEQUEÑA SOPORTE "U" 15** | Small EUME hinge with small 15 U bracket | Scharnier EUME klein mit kleinem Bock in Winkelform | Petite charnière EUME avec chape petit U |



939 g

| INOX      | ZINC      |
|-----------|-----------|
| 401130206 | 401130106 |



# BISAGRAS TRASERAS EUME

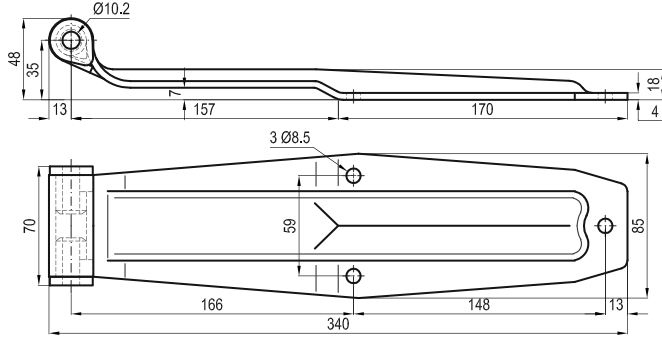
REAR HINGES RÜCKWÄRTIGE SCHARNIERE CHARNIÈRES ARRIÈRES

9.8

**PALA EUME GRANDE | Big EUME hinge blade | Scharnierblatt EUME gross | Grande penture EUME |**

| INOX      | ZINC      |
|-----------|-----------|
| 205010205 | 205010105 |

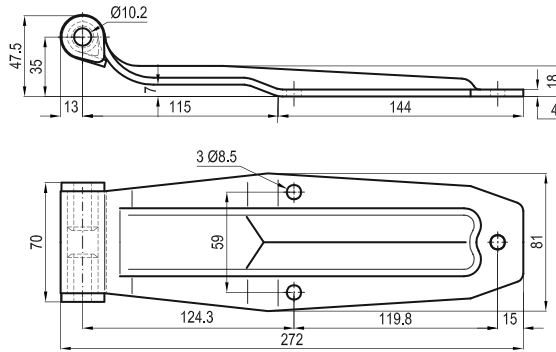
945 g



**PALA EUME PEQUEÑA | Small EUME hinge blade | Scharnierblatt EUME klein | Petite penture EUME |**

| INOX      | ZINC      |
|-----------|-----------|
| 205010206 | 205010106 |

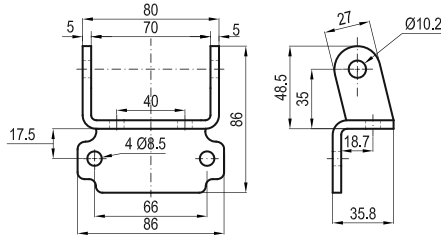
741 g



**SOPORTE ESCUADRA 30 | Square hinge bracket | Scharnierbock Winkelform | Chape en équerre |**

| INOX      | ZINC      |
|-----------|-----------|
| 205020210 | 205020110 |

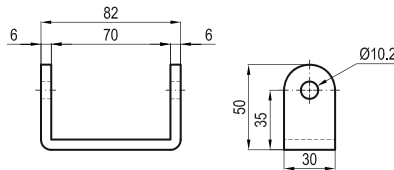
272 g



**SOPORTE "U" 30 | U 30 hinge bracket | Scharnierbock in U-Form 30 | Chape en U 30 |**

| INOX      | ZINC      |
|-----------|-----------|
| 205020212 | 205020112 |

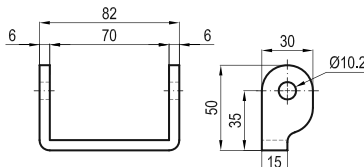
204 g



**SOPORTE "U" 15 | U 15 hinge bracket | Scharnierbock in U-Form 15 | Chape en U 15 |**

| INOX      | ZINC      |
|-----------|-----------|
| 205020213 | 205020113 |

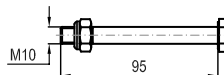
147 g



**TORNILLO M. 10 x 95 C/TUERCA AUTOBL. | Pin and nut | Bolzen mit Mutter | Axe et écrou |**

| INOX      | ZINC      |
|-----------|-----------|
| 302070202 | 302070102 |

76 g

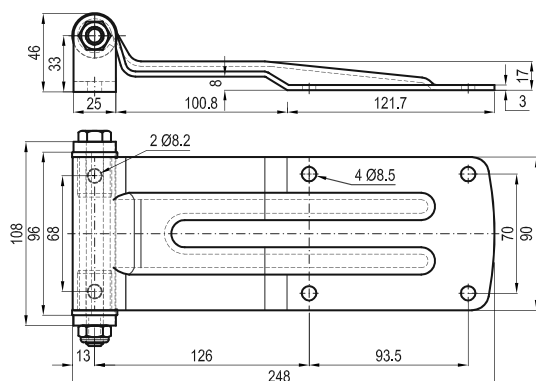


# BISAGRAS TRASERAS TAMEGA

REAR HINGES RÜCKWÄRTIGE SCHARNIERE CHARNIÈRES ARRIÈRES

9.9

**BISAGRA TRASERA TAMEGA CUELLO LARGO SOPORTE BAJO 25** | Rear TAMEGA hinge with long neck lower 25 bracket | Scharnier TAMEGA mit langem Hals u. niedrigem 25 Bock | Charnière TAMEGA col long chape basse 25 |

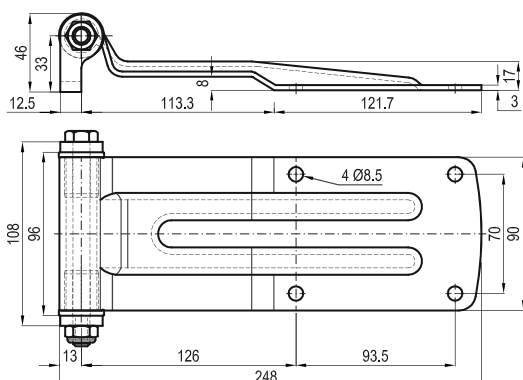


939 g

| INOX      | ZINC      |
|-----------|-----------|
| 401520213 | 401520111 |



**BISAGRA TRASERA TAMEGA CUELLO LARGO SOPORTE BAJO 12,5** | Rear TAMEGA hinge with long neck lower 12,5 bracket | Scharnier TAMEGA mit langem Hals u. niedrigem 12,5 Bock | Charnière TAMEGA col long chape basse 12,5 |

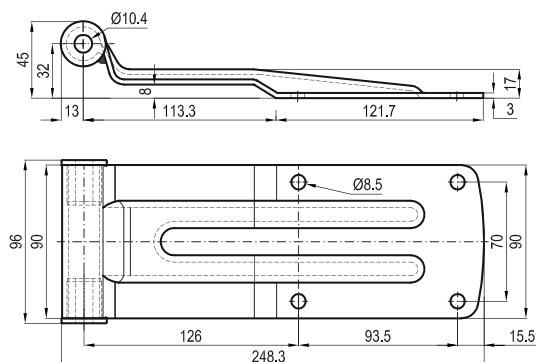


866 g

| INOX      | ZINC      |
|-----------|-----------|
| 401510213 | 401510111 |



**PALA TAMEGA 3mm CUELLO LARGO** | Long neck TAMEGA hinge blade | Scharnierblatt TAMEGA langer Hals | Penture TAMEGA col long |



664 g

| INOX      | ZINC      |
|-----------|-----------|
| 205010253 | 205010153 |



# BISAGRAS TRASERAS TAMEGA

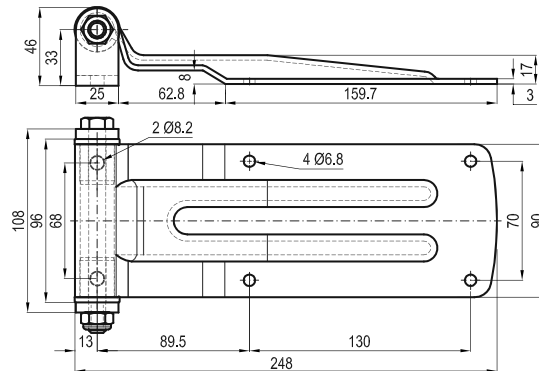
REAR HINGES RÜCKWÄRTIGE SCHARNIERE CHARNIÈRES ARRIÈRES

9.10

**BISAGRA TRASERA TAMEGA CUELLO CORTO SOPORTE BAJO 25** | Rear TAMEGA hinge with short neck lower 25 bracket | Scharnier TAMEGA mit kurzer Hals u. niedrigem Bock 25 | Charnière TAMEGA col court chape basse 25 |

| INOX      | ZINC      |
|-----------|-----------|
| 401520214 | 401510111 |

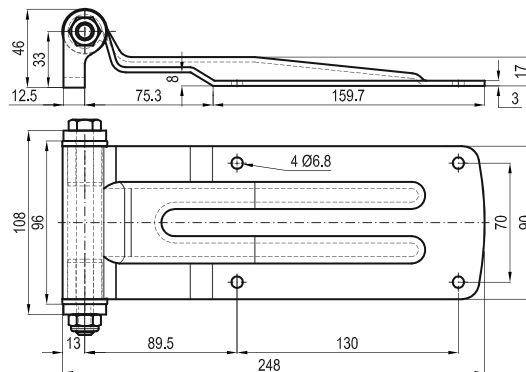
948 g



**BISAGRA TRASERA TAMEGA CUELLO CORTO SOPORTE BAJO 12,5** | Rear hinge TAMEGA with short neck lower bracket 12,5 | Scharnier TAMEGA mit kurzem Hals u. niedrigem 12,5 Bock | Charnière TAMEGA col court chape basse 12,5 |

| INOX      | ZINC      |
|-----------|-----------|
| 401510214 | 401510114 |

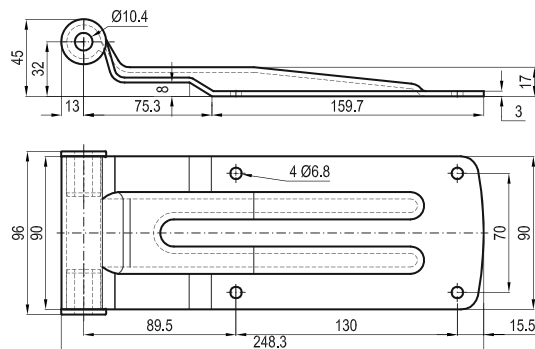
875 g



**PALA TAMEGA 3mm CUELLO CORTO** | Short neck TAMEGA hinge blade | Scharnierblatt TAMEGA kurzer Hals | Penture TAMEGA col court |

| INOX      | ZINC      |
|-----------|-----------|
| 205010254 | 205010154 |

673 g

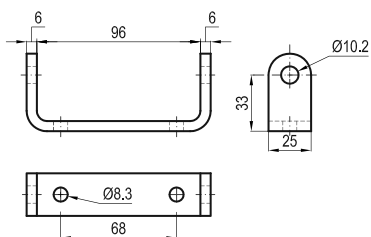


# BISAGRAS TRASERAS TAMEGA

REAR HINGES RÜCKWÄRTIGE SCHARNIERE CHARNIÈRES ARRIÈRES

9.11

SOPORTE BAJO 25 | 25 lower bracket | Scharnierbock in U-Form 25 | Chape basse 25 |

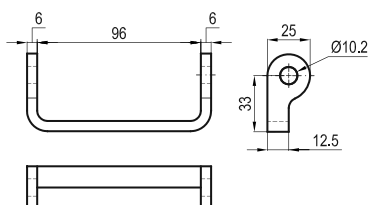


185 g

| INOX      | ZINC      |
|-----------|-----------|
| 205020277 | 205020177 |



SOPORTE BAJO 12,5 | 12,5 lower bracket | Scharnierbock in U-Form 12,5 | Chape basse 12,5 |

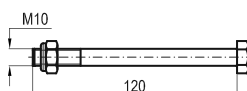


112 g

| INOX      | ZINC      |
|-----------|-----------|
| 205020276 | 205010176 |



TORNILLO M. 10x120 C/TUERCA AUTOBL. | Pin and nut | Bolzen mit Mutter | Axe et écrou |

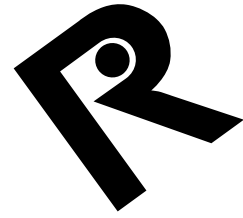


104 g

| INOX      | ZINC      |
|-----------|-----------|
| 302070208 | 302070108 |



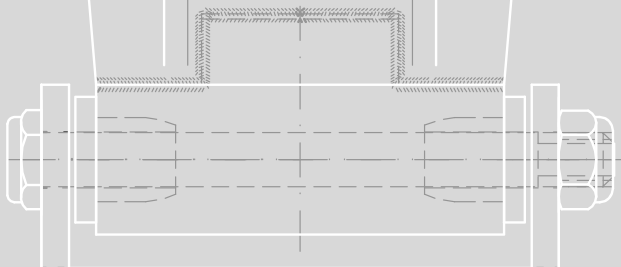




10

SIDE DOOR HINGES  
SEITENTÜRIGE SCHARNIERE  
CHARNIÈRES LATÉRALES

# BISAGRAS LATERALES



LONIA



TAMBRE GRANDE



TAMBRE PEQUEÑA



EUME GRANDE



EUME PEQUEÑA



DOBLE ARTICULACIÓN



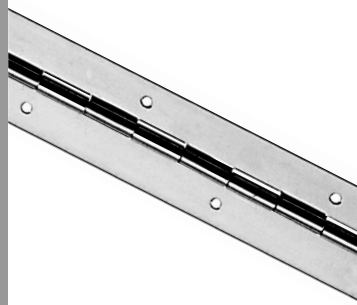
PLANAS



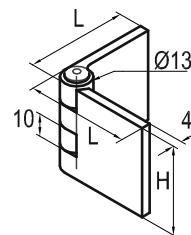
AIREACIÓN



PIANO



LIBRO



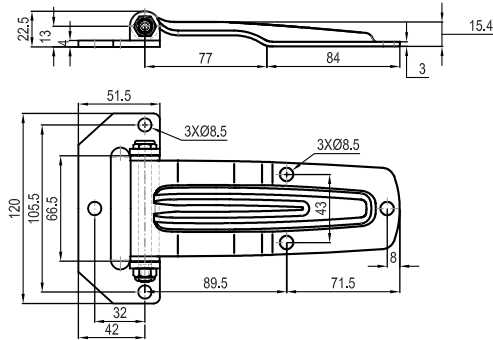


# BISAGRAS LATERALES

SIDE DOOR HINGES SEITENTÜRIGE SCHARNIERE CHARNIÈRES LATÉRALES

10.1

**BISAGRA LATERAL LONIA SOP "L" 59** | Side hinge Lonia with "L" 59 bracket | Seitentürscharnier Lonia mit Bock in L-Form 59 | Charnière latérale Lonia chape "L" 59 |

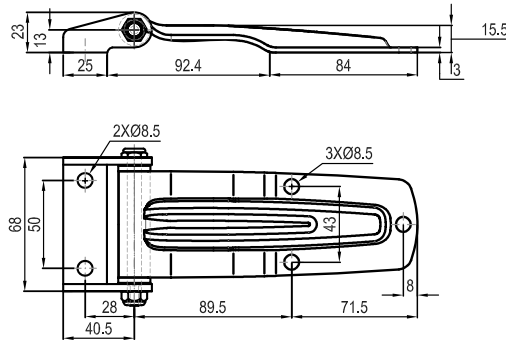


457 g

| INOX      | ZINC      |
|-----------|-----------|
| 401300210 | 401300110 |



**BISAGRA LATERAL LONIA SOP "U" 25** | Side hinge Lonia with "U" 25 bracket | Seitentürscharnier Lonia mit Bock in U-Form 25 | Charnière latérale Lonia chape "U" 25 |

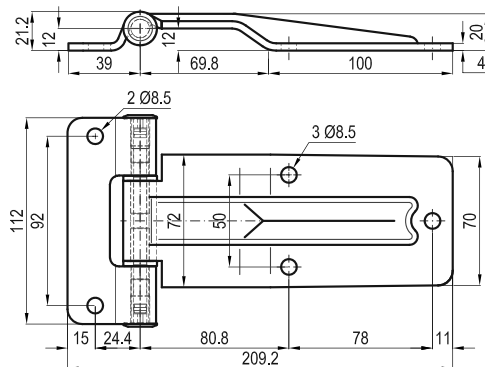


407 g

| INOX      | ZINC      |
|-----------|-----------|
| 401380210 | 401380110 |



**BISAGRA LATERAL TAMBRE GRANDE 180** | Big TAMBRE hinge 180 | Scharnier TAMBRE gross 180 | Grande charnière TAMBRE 180 |

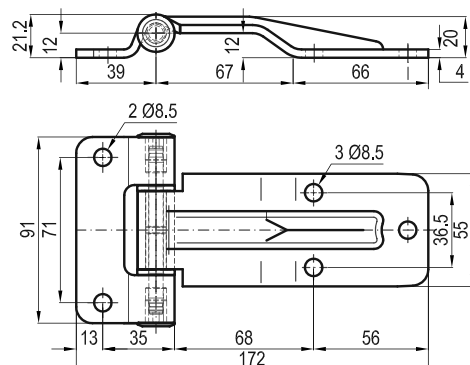


640 g

| INOX      | ZINC      |
|-----------|-----------|
| 401400202 | 401400102 |



**BISAGRA LATERAL TAMBRE PEQUEÑA 180** | Small TAMBRE hinge 180 | Scharnier TAMBRE klein 180 | Petite charnière TAMBRE 180 |



411 g

| INOX      | ZINC      |
|-----------|-----------|
| 401410202 | 401410102 |



# BISAGRAS LATERALES

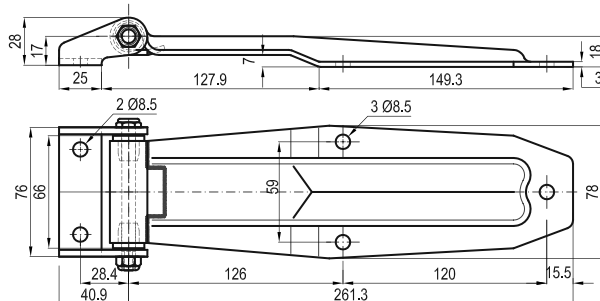
SIDE DOOR HINGES SEITENTÜRIGE SCHARNIERE CHARNIÈRES LATÉRALES

10.2

BISAGRA LATERAL EUME GRANDE 1 | Big EUME hinge 1 | Scharnier EUME gross Bock 1 | Grande charnière EUME 1 |

| INOX      | ZINC      |
|-----------|-----------|
| 401180210 | 401180110 |

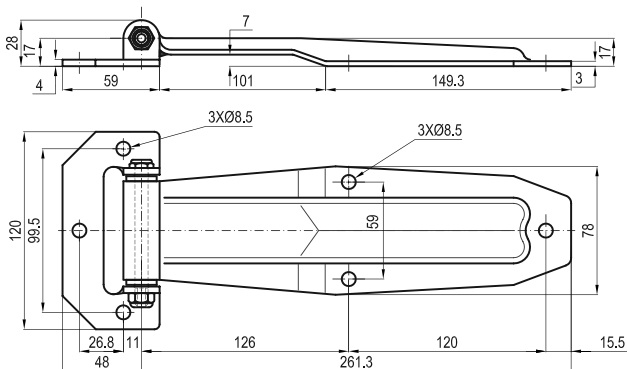
694 g



BISAGRA LATERAL EUME GRANDE 2 | Big EUME hinge 2 | Scharnier EUME gross Bock 2 | Grande charnière EUME 2 |

| INOX      | ZINC      |
|-----------|-----------|
| 401200210 | 401200110 |

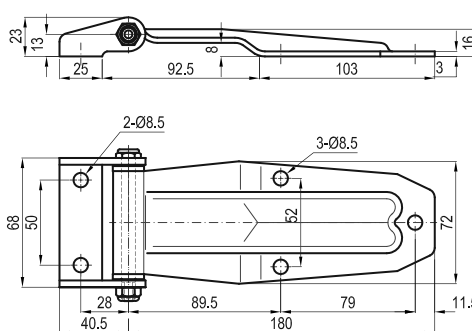
730 g



BISAGRA LATERAL EUME PEQUEÑA 1 | Small EUME hinge 1 | Scharnier EUME klein Bock 1 | Petite charnière EUME 1 |

| INOX      | ZINC      |
|-----------|-----------|
| 401190211 | 401190111 |

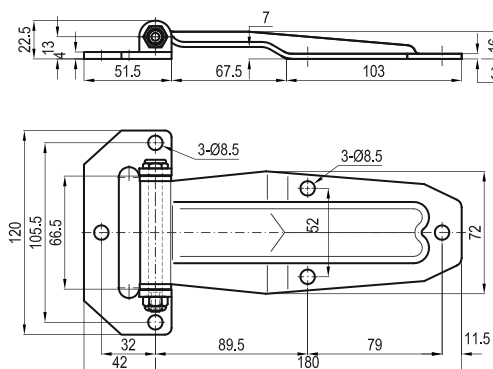
484 g



BISAGRA LATERAL EUME PEQUEÑA 2 | Small EUME hinge 2 | Scharnier EUME klein Bock 2 | Petite charnière EUME 2 |

| INOX      | ZINC      |
|-----------|-----------|
| 401210211 | 401210111 |

504 g

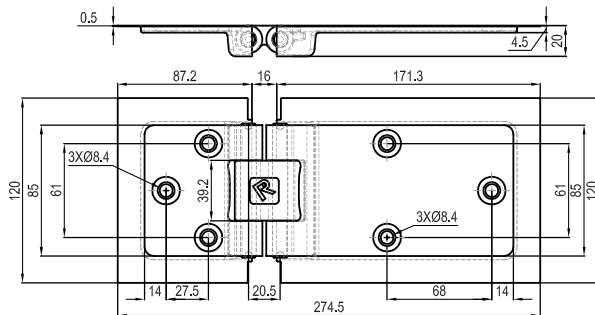


# BISAGRAS LATERALES

SIDE DOOR HINGES SEITENTÜRIGE SCHARNIERE CHARNIÈRES LATÉRALES

10.3

BISAGRA DOBLE ARTICULACIÓN | Double knuckle hinge | Doppelgelenkscharnier | Charnière double articulation |

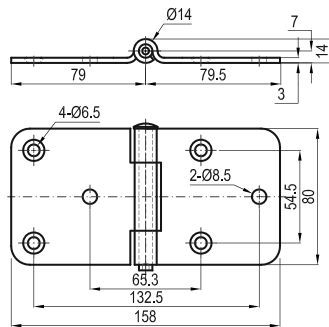


1.033 g

INOX  
401240207



BISAGRA LATERAL PLANA 159x80 | Flat side door hinge | Flaches Seitentürscharnier 159x80 | Charnière plate 158x80 |

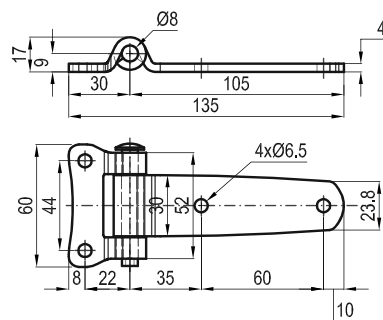


352 g

INOX  
401220203



BISAGRA LATERAL PLANA | Flat side door hinges | Flache Seitentürscharniere | Charnière plate |



222 g

INOX  
401220207



# BISAGRAS LATERALES

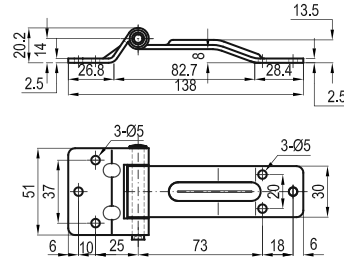
SIDE DOOR HINGES SEITENTÜRIGE SCHARNIERE CHARNIÈRES LATÉRALES

10.4

BISAGRA AIREACIÓN TAMBRE | Ventilation TAMBRE hinge | Lüftungsscharnier TAMBRE | Charnière de ventilation TAMBRE |

| INOX      | ZINC      |
|-----------|-----------|
| 401260202 | 401260102 |

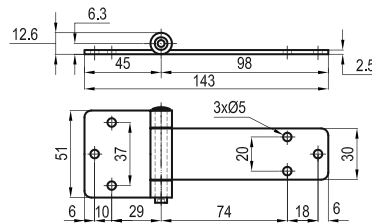
142 g



BISAGRA AIREACIÓN PLANA | Flat ventilation hinge | Lüftungsscharnier flach | Charnière de ventilation plate |

| INOX      | ZINC      |
|-----------|-----------|
| 401260203 | 401260103 |

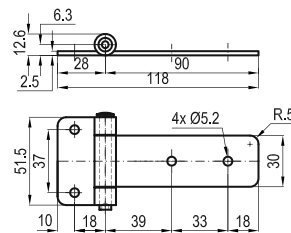
142 g



BISAGRA AIREACIÓN PLANA CORTA | Flat short ventilation hinge | Lüftungsscharnier flach kurz | Charnière de ventilation plate courte |

| INOX      |
|-----------|
| 401260204 |

122 g



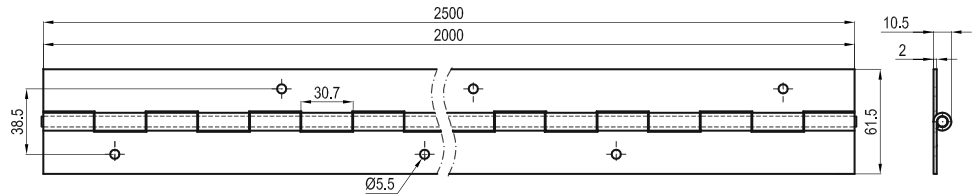
# BISAGRAS LATERALES

SIDE DOOR HINGES SEITENTÜRIGE SCHARNIERE CHARNIÈRES LATÉRALES

10.5

BISAGRA PIANO | Charniere piano | Klavierband | Charnière double feuille |

| L     | INOX      | ZINC      |         |
|-------|-----------|-----------|---------|
| 2.000 | 401250201 | 401250101 | 2.955 g |
| 2.500 | 401250202 | 401250102 | 3.727 g |



# BISAGRAS LATERALES

SIDE DOOR HINGES SEITENTÜRIGE SCHARNIERE CHARNIÈRES LATÉRALES

10.6

BISAGRA DE LIBRO | Double sheet hinge | Scharnier Buchform | Charnière à deux feuilles |

| H<br>(mm) | L<br>(mm) | SIN ENGRASADOR   | CON ENGRASADOR   |               |
|-----------|-----------|--|--|---------------|
|           |           | <i>Without greaser</i><br><i>Ohne Schmiernippel</i><br><i>Sans graisseur</i> | <i>With greaser</i><br><i>Mit Schmiernippel</i><br><i>Avec graisseur</i> |               |
| 30        | 60        | <b>402010301</b>   |  | 128 g         |
| 40        | 40        | <b>402020305</b>   |  | 172 g         |
| 40        | 60        | <b>402020301</b>   |  | 222 g         |
| 40        | 70        | <b>402020302</b>   |  | 247 g         |
| 40        | 80        | <b>402020303</b>   | <b>402120303</b>   | 272 g         |
| 40        | 100       | <b>402020304</b>   | <b>402120304</b>   | 322 g         |
| 50        | 60        | <b>402030301</b>   | <b>402130301</b>   | 292 g         |
| 50        | 70        | <b>402030302</b>   | <b>402130302</b>   | 339 g         |
| 50        | 80        | <b>402030303</b>   | <b>402130303</b>   | 386 g         |
| 50        | 100       | <b>402030304</b>   | <b>402130304</b>   | 480 g         |
| 60        | 40        | <b>402040305</b>   | <b>402140305</b>   | 194 g - 235 g |
| 60        | 50        | <b>402040306</b>   | <b>402140306</b>   | 243 g - 295 g |
| 60        | 60        | <b>402040301</b>   | <b>402140301</b>   | 288 g - 348 g |
| 60        | 70        | <b>402040302</b>   | <b>402140302</b>   | 340 g - 405 g |
| 60        | 80        | <b>402040303</b>   | <b>402140303</b>   | 462 g - 462 g |
| 60        | 100       | <b>402040304</b>   | <b>402140304</b>   | 580 g - 580 g |
| 80        | 60        | <b>402050301</b>   | <b>402150301</b>   | 458 g         |
| 80        | 70        | <b>402050302</b>   | <b>402150302</b>   | 530 g - 533 g |
| 80        | 80        | <b>402050303</b>   | <b>402150303</b>   | 608 g - 680 g |
| 80        | 100       | <b>402050304</b>   | <b>402150304</b>   | 758 g         |
| 108       | 100       | <b>402060301</b>   |  | 1.038 g       |

